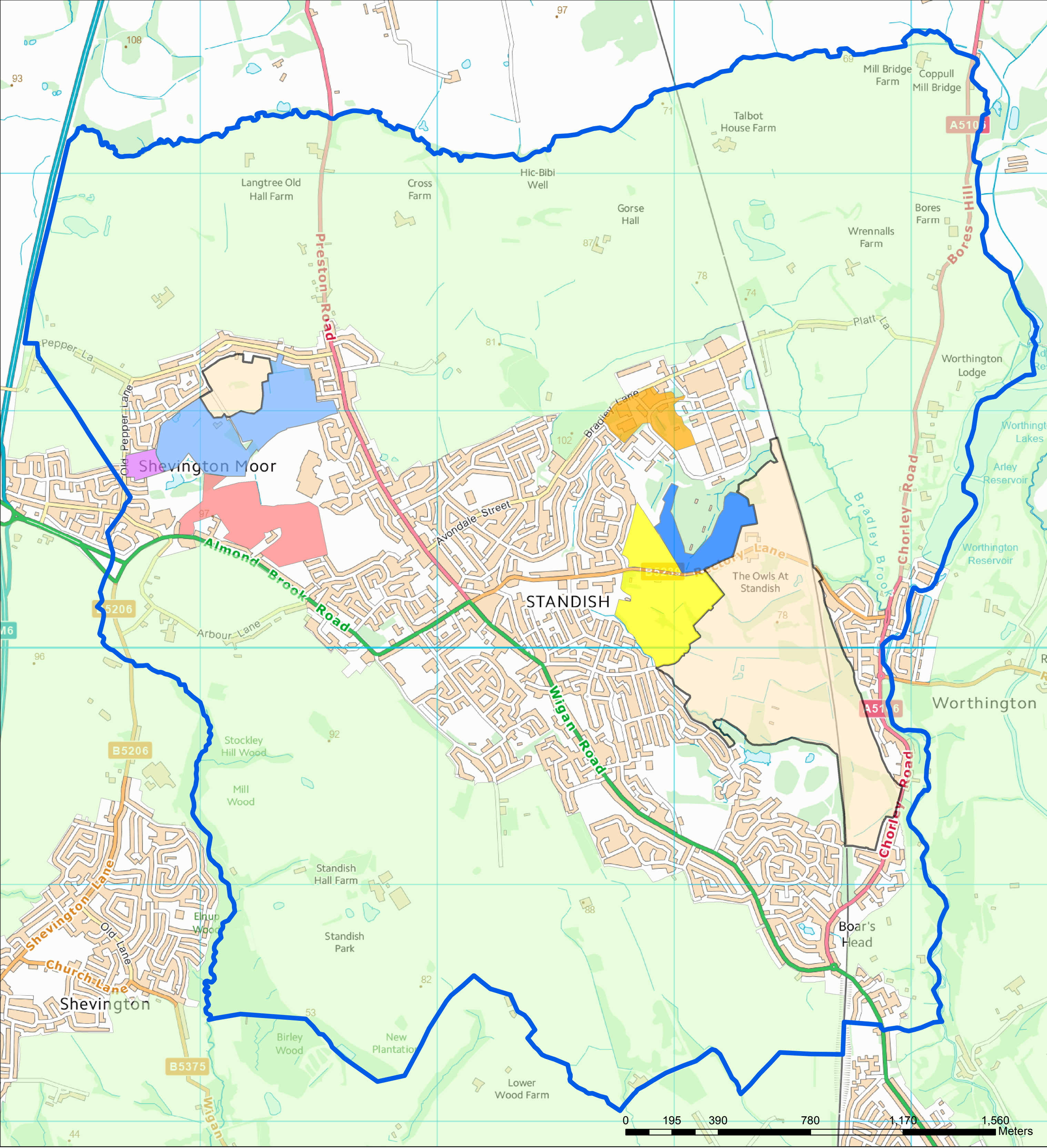


# Proposed Standish Neighbourhood Area Planning Applications and Remaining Safeguarded Land



- Proposed Standish Neighbourhood Area**
- Planning Applications 2013**
- A/13/77974, Outline Application for residential development with access (all other matters reserved)
  - A/13/78636, Application for mixed use development comprising up to 250 dwellings, leisure facilities, green infrastructure and new roundabout access to Rectory Lane. (All matters reserved).
  - A/13/78828, Outline Application for residential development up to 300 dwellings and open space seeking approval of access. (All other matters reserved)
- Planning Applications 2014**
- A/14/78972, Outline application for residential development upto 150 dwellings (all matters reserved).
  - A/14/79165, Outline application for residential development of up to 300 dwellings and open space, seeking approval of access (all other matters reserved) including demolition of farmhouse and associated buildings.
  - A/14/79462, To erect 39 Dwellings with associated works. Reserved Matters of Application A/13/78719.
- Green Belt**
- Safeguarded Land**