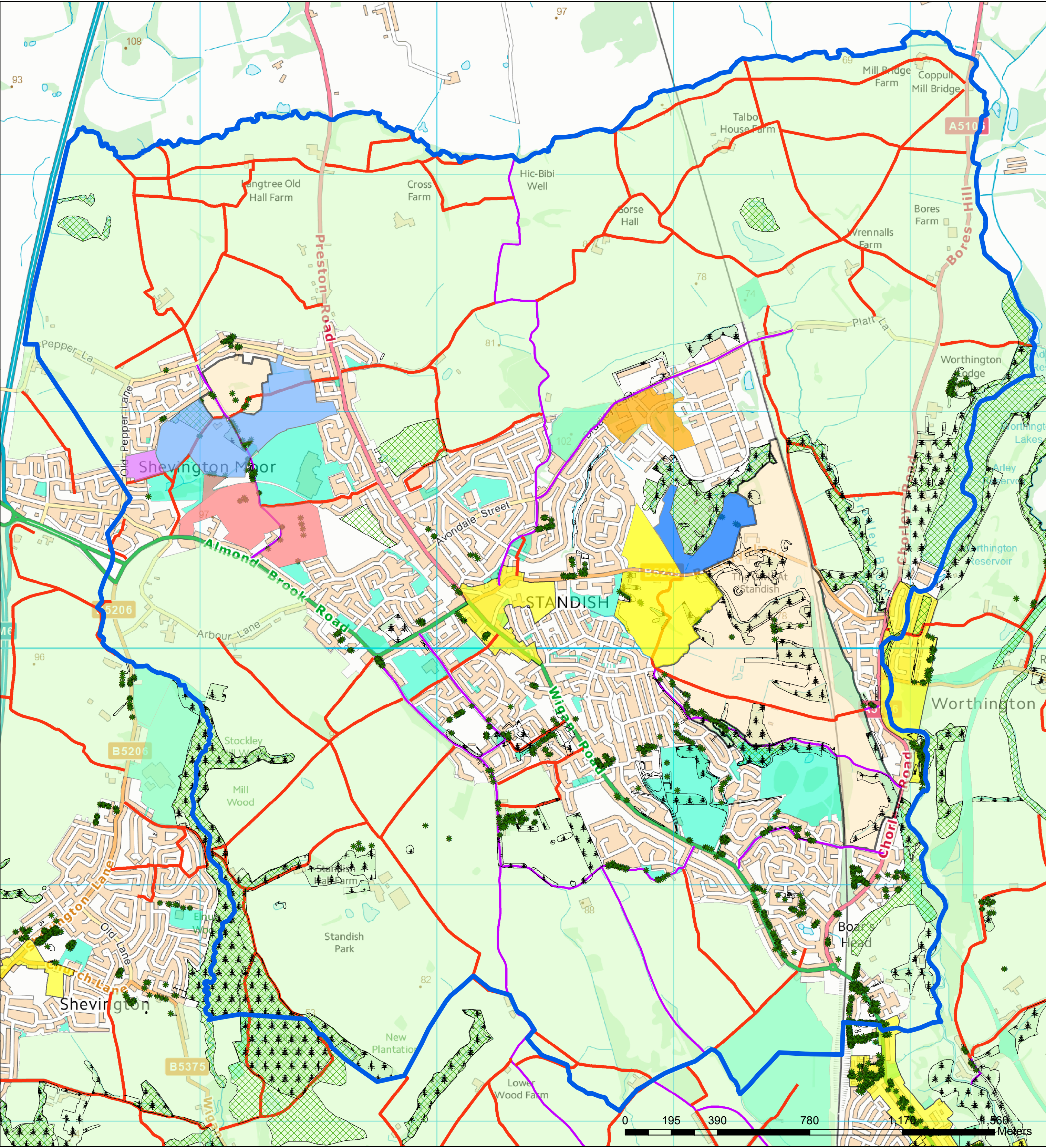


Proposed Standish Neighbourhood Area  
All layers



- Proposed Standish Neighbourhood Area
- Planning Applications 2013
  - A/13/77974, Outline Application for residential development with access (all other matters reserved)
  - A/13/78636, Application for mixed use development comprising up to 250 dwellings, leisure facilities, green infrastructure and new roundabout access to Rectory Lane. (All matters reserved).
  - A/13/78828, Outline Application for residential development up to 300 dwellings and open space seeking approval of access. (All other matters reserved)
- Planning Applications 2014
  - A/14/78972, Outline application for residential development upto 150 dwellings (all matters reserved).
  - A/14/79165, Outline application for residential development of up to 300 dwellings and open space, seeking approval of access (all other matters reserved) including demolition of farmhouse and associated buildings.
  - A/14/79462, To erect 39 Dwellings with associated works. Reserved Matters of Application A/13/78719.
- Independent TPO
- General TPO
- AmendedSBIs layer.lyr
- Public Rights of Way
- CORPDATA.Bridleways
- Conservation Areas
- Green Belt
- Safeguarded Land
- Council Assets